



CHAIR ROBERT GONZALES
VICE CHAIR PATTY LOPEZ
COMMISSIONER ERICA FRIEND
COMMISSIONER NATASHA SANCHEZ-BROOKS
COMMISSIONER JULIE CUELLAR

CITY OF SAN FERNANDO

PARKS, WELLNESS, AND RECREATION COMMISSION
REGULAR MEETING AGENDA SUMMARY
THURSDAY, JUNE 13, 2024 – 6:30 PM

CITY HALL COUNCIL CHAMBERS
117 MACNEIL STREET
SAN FERNANDO, CALIFORNIA 91340

PUBLIC PARTICIPATION OPTIONS

Please visit the City's YouTube channel to live stream and watch previously recorded Parks, Wellness, and Recreation Commission meetings, which is also available with Spanish subtitles at: <https://www.youtube.com/c/CityOfSanFernando>

In accordance with the Americans with Disabilities Act of 1990, if you require a disability-related modification/accommodation to attend or participate in this meeting, including in-person translation services, or other services please call the Recreation and Community Services Department at (818) 898-7349 or email at LMoreno@sfcity.org at least 2 business days prior to the meeting.

SUBMIT PUBLIC COMMENT IN PERSON:

Members of the public may provide comments in person in the City Council Chambers during the Public Comments section of the Agenda by submitting a comment card to the Board Secretary.

SUBMIT PUBLIC COMMENT VIA EMAIL:

Members of the public may submit comments by email to LMoreno@sfcity.org no later than **12:00 p.m. the day of the meeting**, to ensure distribution to the Parks, Wellness, and Recreation Commission prior to consideration of the agenda. Comments received via email will be distributed to the Parks, Wellness, and Recreation Commission and made part of the official public record of the meeting.

CALL-IN TO PROVIDE PUBLIC COMMENT LIVE AT THE MEETING:

Members of the Public may **call-in between 6:30 p.m. and 6:45 p.m.** Comments will be heard in the order received, and limited to three minutes. If necessary, the call-in period may be extended by the Chair.

Call-in Telephone Number: (669) 900-6833
Meeting ID: 986 1620 1615
Passcode: 988843

When connecting to the Zoom meeting to speak, you will be placed in a virtual "waiting area," with your audio disabled, until it is your turn to speak and limited to three minutes.

PARKS, WELLNESS, AND RECREATION COMMISSION

Regular Meeting Notice and Agenda – June 13, 2024

Page 2 of 4

CALL TO ORDER

ROLL CALL

TELECONFERENCE REQUESTS/DISCLOSURE

Recommend consideration of requests received for remote teleconference meeting participation made by members of the City's legislative bodies, as permitted under the provisions of Assembly Bill (AB) 2449, Government Code Section 54953, and the City of San Fernando adopted Resolution No. 8215, effective March 1, 2023.

PLEDGE OF ALLEGIANCE

Led by Chair

APPROVAL OF AGENDA

Recommend that the Parks, Wellness, and Recreation Commission approve the agenda as presented.

DECORUM AND ORDER

City Commissioners are appointed by City Council and must be free to discuss issues confronting the city in an orderly environment. Members of the public attending City Commission meetings shall observe the same rules of order and decorum applicable to the City Council ([SF Procedural Manual](#)). Any person making impertinent derogatory or slanderous remarks or who becomes boisterous while addressing a City Commission or while attending a City Commission meeting, may be removed from the room if the Presiding Officer so directs the Sergeant-At-Arms and such person may be barred from further audience before the City Commission.

PUBLIC STATEMENTS – WRITTEN/ORAL

Members of the public may **provide comments in person in the City Council Chambers** during the Public Comments section of the Agenda by submitting a comment card to the Board Secretary.

Members of the public may submit comments by email to LMoreno@sfcity.org no later than **12:00 p.m. the day of the meeting**, to ensure distribution to the Parks, Wellness, and Recreation Commission and made part of the official public record of the meeting.

Members of the public may provide a **live public comment by calling in between 6:30 p.m. and 6:45 p.m. CALL- IN INFORMATION: Telephone Number: Telephone Number: (669) 900-6833, Meeting ID: 986 1620 1615; Passcode: 988843**

PARKS, WELLNESS, AND RECREATION COMMISSION

Regular Meeting Notice and Agenda – June 13, 2024

Page 3 of 4

CONSENT CALENDAR

Items on the Consent Calendar are considered routine and may be disposed of by a single motion to adopt staff recommendation. If the Parks, Wellness, and Recreation Commission wishes to discuss any item, it should first be removed from the Consent Calendar.

1) CONSIDERATION TO APPROVE PARKS, WELLNESS, AND RECREATION COMMISSION MEETING MINUTES FOR:

- a. May 9, 2024

ADMINISTRATIVE REPORTS

2) UPDATE ON THE SAN FERNANDO PARK OPPORTUNITY PLAN (SF POP)

Recommend that the Parks, Wellness, and Recreation Commission receive and file an update on the SF POP.

3) UPDATE ON THE PIONEER PARK PLAYGROUND RENOVATION PROJECT

Recommend that the Parks, Wellness, and Recreation Commission receive and file an update report on the Pioneer Park Playground Renovation Project.

4) CESAR E. CHAVEZ MEMORIAL

Recommend that the Parks, Wellness, and Recreation Commission:

- a. Discuss Ad Hoc Committee Updates;
- b. Continue to meet with Pueblo Y Salud until a renovation plan for the Memorial Plaza can be developed; and
- c. Provide staff direction as appropriate.

5) DEPARTMENT PROGRAMS AND SERVICES UPDATE

Recommend that the Parks, Wellness, and Recreation Commission:

PARKS, WELLNESS, AND RECREATION COMMISSION

Regular Meeting Notice and Agenda – June 13, 2024

Page 4 of 4

- a. Receive and file a report updating the programs, services activities, and business conducted by the Recreation and Community Services Department; and
- b. Provide staff direction as appropriate.

STAFF COMMUNICATION

COMMISSIONER UPDATES/REQUESTS TO AGENDIZE ITEM FOR DISCUSSION AT A FUTURE MEETING

Commissioner(s) may request to agendize an item for discussion at a future meeting, subject to approval by the Commission. Requests should align with the commission's scope of responsibility, adhere to City Council policies, and consider the availability of staff resources and budget constraints.

ADJOURNMENT The meeting will adjourn to its next regular meeting.

AFFIDAVIT OF POSTING

I hereby certify under penalty of perjury under the laws of the State of California that the foregoing agenda was posted on the City Hall bulletin board not less than 72 hours prior to the meeting.

Dated: _____ at: _____

Signed By: _____

Agendas and complete Agenda Packets (including staff reports and exhibits related to each item) are posted on the City's Internet Web site (www.sfcity.org). These are also available for public reviewing prior to a meeting at the Recreation and Community Services Department Public Counter. Any public writings distributed by the Parks, Wellness, and Recreation Commission to at least a majority of the Commissioners regarding any item on this regular meeting agenda will also be made available at the Recreation and Community Services Department Public Counter located at 208 Park Avenue, San Fernando, CA, 91340 during normal business hours. In addition, the City may also post such documents on the City's Web Site at www.sfcity.org. In accordance with the Americans with Disabilities Act of 1990, if you require a disability-related modification/accommodation to attend or participate in this meeting, including auxiliary aids or services please call the Recreation and Community Services Department Office at (818) 898-7349 or LMoreno@sfcity.org at least 48 hours prior to the meeting.



CITY OF SAN FERNANDO
PARKS, WELLNESS AND RECREATION COMMISSION

REGULAR MEETING MINUTES
MAY 9, 2024
ZOOM MEETING STREAMED ON YOUTUBE

THE FOLLOWING MINUTES ARE A SUMMARY OF ACTIONS TAKEN BY THE PARKS, WELLNESS AND RECREATION COMMISSION. VIDEO AND AUDIO OF THE ACTUAL MEETING ARE AVAILABLE FOR LISTENING AT: <https://www.youtube.com/c/CityOfSanFernando>

OATH OF OFFICE

Staff administered the Oath of Office to incoming Commissioner Julie Cuellar prior to the meeting.

CALL TO ORDER/ROLL CALL

Vice Chair Patty Lopez called the meeting to order at 6:32 p.m. Administrative Assistant, Linda Bowden-Moreno, called the roll call.

The following persons were recorded as present:

PRESENT:

Commissioners Patty Lopez, Natasha Sanchez-Brooks and Julie Cuellar.

ABSENT:

Commissioners Robert Gonzales and Erica Friend

ALSO PRESENT:

Recreation and Community Services Director Julio Salcedo, Administrative Assistant Linda Bowden-Moreno, and Office Clerk Soledad Chavez.

PLEDGE OF ALLEGIANCE

Vice Chair Patty Lopez invited the Girl Scout Troop to lead in the Pledge of Allegiance.

PARKS, WELLNESS AND RECREATION COMMISSION

Regular Meeting Minutes – May 9, 2024

Page 2 of 5

APPROVAL OF AGENDA

Commissioner Sanchez-Brooks motioned to approve the agenda for the May 9, 2024 Parks, Wellness and Recreation Commission Regular Meeting. Vice Chair Patty Lopez seconded the motion. The motion passed unanimously with the following roll call vote:

AYES: P. Lopez, N. Sanchez-Brooks, J. Cuellar

NOES:

ABSENT: R. Gonzales, E. Friend

ABSTAIN:

PRESENTATIONS

Welcome and introduction of incoming Commissioner Julie Cuellar.

PUBLIC STATEMENTS – WRITTEN/ORAL

Ricardo Benitez, member of the public, spoke regarding his support and love of this community. He welcomed incoming Commissioner Julie Cuellar and also commented on the nice event held at Rudy Ortega Park on May 5th.

CONSENT CALENDAR

1. APPROVAL OF MINUTES

Commissioner Sanchez-Brooks motioned to approve the Consent Calendar approving the Minutes of the April 11, 2024 Parks, Wellness and Recreation Commission Meeting. Commissioner Julie Cuellar seconded the motion. The motion passed unanimously with the following roll call vote:

AYES: P. Lopez, N. Sanchez-Brooks, Julie Cuellar

NOES:

ABSENT: R. Gonzales, E. Friend

ABSTAIN:

ADMINISTRATIVE REPORTS

PARKS, WELLNESS AND RECREATION COMMISSION

Regular Meeting Minutes – May 9, 2024

Page 3 of 5

2. UPDATE ON THE SAN FERNANDO PARK OPPORTUNITY PLAN (SF POP) – Robert Douglas with KDI provided a presentation updating on the various community engagements consisting of three focus groups, walk audits and meetings with staff. Focus groups consisted of youth from the TBC program and seniors from the community. Some of the top priorities identified include more activities including dances, dog parks, community gardens, safety concerns, and skate parks. Priority locations were discussed during the walk audit.

KDI is currently conducting GIS studies to identify available spaces while considering demographics and population in the City. Next steps include review of the priorities and site selection, coordinating an additional walk audit of top sites, and scheduling community design workshops.

Commissioner Sanchez-Brooks had questions regarding the number of participants in the focus groups and the next steps regarding priorities identified in those meetings. She also discussed the need to include the young adult demographic (ages 18 – 28) in gathering input on priorities.

Commissioner Cuellar had questions regarding the time of the focus group meetings. She also inquired about lots identified as public or private land. Commissioner Cuellar mentioned that many residents have been vocal about the need for a dog park in this City.

Vice Chair Lopez thanked KDI for their efforts in gathering community input. She supports the idea of a dog park and also mentioned the need for a space at the swap meet for youth waiting for afterschool pickup. She inquired about bilingual community engagement opportunities and all materials to be available in Spanish.

3. UPDATE ON THE LAS PALMAS PARK REVITALIZATION PROJECT – J. Salcedo discussed the concept plan of the Las Palmas Park Revitalization Project approved by Council.

Commissioners had questions regarding adequate seating around the playground, the number of picnic tables, what changes are planned for the concession stand, the life expectancy of playground flooring and maintenance plan. Chair Gonzales inquired about the existing curb by the picnic areas and whether it would be removed due to ADA parking redesign and asked if there are plans to rehab the mural. .

RJM Design Company confirmed that benches will be installed around the playground area, a total of twelve picnic tables will be installed (three shelters, each with four picnic tables), concession stand remodel will include replacement of counter tops/cabinets and installation of additional electrical outlets, playground flooring is expected to last 10-15 years with a coordinated maintenance plan in place, the curb by the picnic area will be removed and replaced with a level

PARKS, WELLNESS AND RECREATION COMMISSION

Regular Meeting Minutes – May 9, 2024

Page 4 of 5

sidewalk. In regards to rehab of the mural, this item is not part of the scope of work and would require a specialized consultant.

Commissioner Sanchez-Brooks had questions regarding shading for the benches around the playground area.

Commissioner Cuellar had questions about the design options and if this is the finalized design.

4. CESAR E. CHAVEZ MEMORIAL – J. Salcedo provided an update on this item. The Ad Hoc Committee members and staff met to review the MOU with Pueblo Y Salud (PYS) detailing the expectations and responsibilities of PYS and the City. A spreadsheet was created with the details and shared with the Ad Hoc. The next step is to schedule a meeting with PYS and the Ad Hoc Committee.

J. Salcedo informed the Commission that the Cesar Chavez Day of Service is planned for this weekend at the monument. The event will include educational components and an opportunity to clean up the memorial.

5. DEPARTMENT PROGRAMS AND SERVICES UPDATE – Staff provided a report and presentation to receive and file providing updates on the programs, activities and events. All information on programming and activities is available on the City website.

STAFF COMMUNICATION

J. Salcedo shared that the upcoming summer season will bring lots of great events such as concerts and movies at the park, the Day Camp program, senior activities and more. Commissioners will be kept informed as the season approaches.

COMMISSIONER UPDATES/REQUESTS TO AGENDIZE ITEM FOR DISCUSSION AT A FUTURE MEETING

Commissioner Sanchez-Brooks thanked staff and looks forward to all the upcoming events. She also requested an update on the Pioneer Park Project and a calendar of summer events.

Commissioner Cuellar thanked staff for so many great events and activities offered to the community.

PARKS, WELLNESS AND RECREATION COMMISSION

Regular Meeting Minutes – May 9, 2024

Page 5 of 5

Vice Chair Lopez requested to add an agenda item on the process and rules of renting facilities. She also requested a copy of today's KDI presentation.

ADJOURNMENT

Vice Chair Lopez adjourned the Parks, Wellness and Recreation Commission meeting at 7:38 p.m.



MEMORANDUM

To: Chair Robert Gonzales and Commissioners

From: Julio Salcedo, Director of Recreation and Community Services

Date: 6/13/24

Subject: San Fernando Park Opportunity Plan

RECOMMENDATION

It is recommended that the Parks, Wellness and Recreation (PWR) Commission receive an update regarding the San Fernando Park Opportunity Plan and offer feedback and recommendations.

BACKGROUND/ANALYSIS

KDI works with under resourced communities to identify vacant lots for future use and development opportunities through community engagement. On April 11, 2024, Adriana Carías-Sison with KDI provided a report on the San Fernando Park Opportunity Plan. On May 9, 2024, Robert Douglas with KDI presented an update on the various community engagements consisting of three focus groups, walk audits and meetings with staff.

BUDGET IMPACT

There is no impact to the budget by discussing this item.



AGENDA REPORT

To: Chair Robert Gonzales and Commissioners

From: Julio Salcedo, Director of Recreation and Community Services
By: Maribel Perez, Recreation and Community Services Supervisor

Date: June 13, 2024

Subject: Update on the Pioneer Park Playground Renovation Project

RECOMMENDATION:

It is recommended that the Parks, Wellness and Recreation Commission:

- a. Receive and file this update report on the Pioneer Park Playground Renovation Project.

BACKGROUND:

1. On November 9, 2023, staff presented two additional playground designs to the Parks, Wellness and Recreation Commission (PWRC), which incorporated the ideas gathered from the community. The PWRC considered all optional design elements put forth by residents and concurred that the most important design element that should be considered was additional shading for the playground.
2. On December 4, 2023, staff presented all design options to the City Council for final approval. The City Council considered the feedback collected from the community engagement meetings, as well as the recommendations from the PWRC, and directed staff to return with a final design option that focused on maximum shade coverage with fewer gaps for sunlight to get through.
3. On January 16, 2024, City Council approved Design Option 7 with maximum shade coverage over the playground area.

ANALYSIS:

The Pioneer Park Playground Renovation Project aims to revitalize the existing playground area, making it a safer, more engaging, and inclusive space for the community. The design focuses on creating a multifunctional and aesthetically pleasing environment that encourages physical

activity, imaginative play and social interaction. Key features of the renovation include age appropriate equipment, inclusive play structures, musical elements and shade coverage.

The playground design underwent considerable review beginning with the residents through the community engagement process, followed by review from the PWRC who then provided their recommendations for City Council consideration. On December 4, 2023, staff presented the City Council with a report outlining the results of the three community engagement meetings and the PWRC's recommendations. In addition to the original design, the report presented two additional designs that were developed based on the feedback that was received through the community engagement process.

In response to City Council discussion and direction on December 4, 2023, Great Western provided a fourth design, Design Option No. 7 (Attachment "A"), which delivers the most robust shade canopy installation, covering the majority of the playground area and minimizing the gaps in between the shade sails. Installation of this Design Option will require 12 columns at different heights varying from eight to 19 feet high from which five separate custom shade sails will be attached to provide optimal coverage.

The revised design was presented to City Council on January 16, 2024. Council approved design option 7 and directed staff to move forward with the project. The new design increased the cost of the overall project by \$254,961 for a total project cost of \$620,293. Construction is expected to begin mid-June with an estimated completion date of August 31, 2024. Next steps include working with Public Works and Great Western to conduct proper community engagement in regards to the next phase of the project and coordinating the official groundbreaking of the project.

CONCLUSION:

It is recommended that the Parks, Wellness and Recreation Commission receive and file this update report on the Pioneer Park Playground Renovation Project.

ATTACHMENT:

A. Playground Design Option 7

Proposal for
City of San Fernando

Prepared by



01-03-2024
Job # 109417-01

Pioneer Park Playground Option 7



435-760-5103 | www.gwpark.com

Pioneer Park Playground-Project 109417-01-Opt 7
San Fernando, CA



Pioneer Park Playground-Project 109417-01-Opt 7
San Fernando, CA



Pioneer Park Playground-Project 109417-01-Opt 7
San Fernando, CA



**Pioneer Park Playground-Project 109417-01-Opt 7
San Fernando, CA**



Pioneer Park Playground-Project 109417-01-Opt 7
San Fernando, CA



Pioneer Park Playground-Project 109417-01-Opt 7
San Fernando, CA



Pioneer Park Playground-Project 109417-01-Opt 7
San Fernando, CA

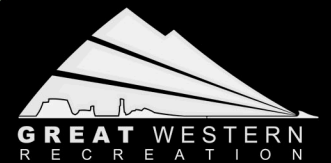


Pioneer Park Playground-Project 109417-01-Opt 7
San Fernando, CA



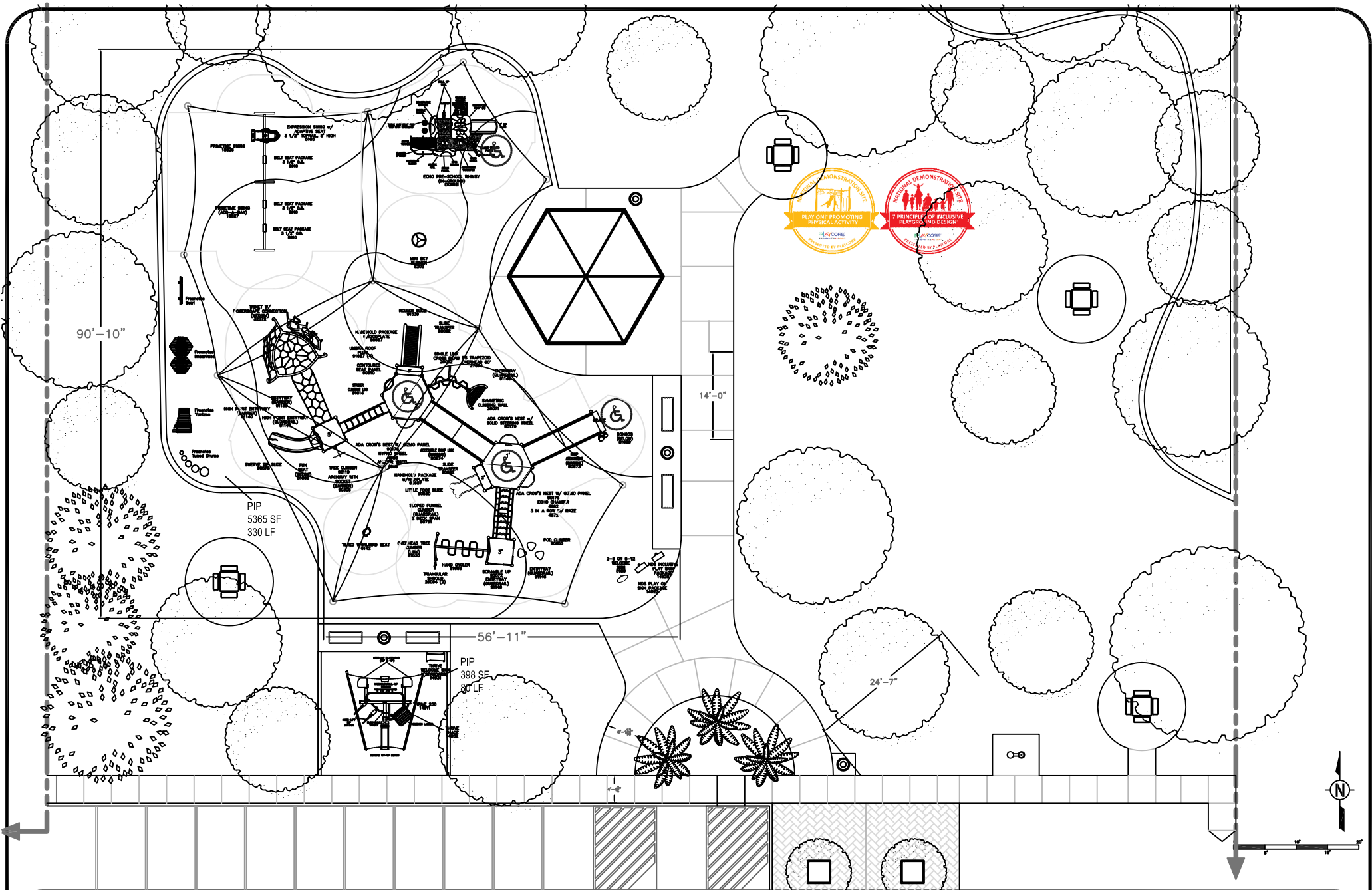
A STRONG FOUNDATION IN PLAY FOR OVER 50 YEARS

P: (435) 245-5055 / F: 435 245-5057 Tyler@gwpark.com



Pioneer Park Playground-Project 109417-01-Opt 7
San Fernando, CA





RE Shultz
Pioneer Park Playground
San Fernando, CA
Representative
Great Western Recreation

SALES REP
TYLER KYRIOPOULOS
435-760-5103
TYLER@GWPARK.COM
Representative of the Alpha Recreation
with: Miron-Reilly Inc.

Total Elevated Play Components	7/15
Total Elevated Play Components Accessible By Ramp	~9/ Required ~8/
Total Elevated Components Accessible By Transfer	7/- Required 4/-
Total Accessible Ground Level Components Shown	4/12 Required 2/5
Total Different Types Of Ground Level Components	3/4 Required 2/3

This play equipment is recommended for children ages 2-5/5-12

Minimum Area Required:
Scale: -
This drawing can be scaled only when in an 18" x 24" format

IMPORTANT: Soft resilient surfacing should be placed in the use zones of all equipment, as specified for each type of equipment, and at depths to meet the critical fall heights as specified by the U.S. consumer Product Safety Commission, ASTM standard F 1487 and Canadian Standard CAN/CSA-Z-614

Drawn By:
EB
Date:
12/14/2023
Drawing Name:
107127-01-Opt 7



GameTime C/O Great Western Recreation
P.O. Box 680121
Fort Payne, AL 35967
Office: 435-245-5055 Fax: 435-245-5057
www.gwpark.com

01/03/2024
Quote #
109417-01-10

Pioneer Park Playground Option 7

City of San Fernando
Attn: Julian Venegas
117 Macneil St
San Fernando, CA 91340
Phone: 818-898-7381
jvenegas@sfcity.org

Ship to Zip 91340

Qty	Part #	Description	List \$	Selling \$	Ext. Selling \$
2-5 Playground					
1	EKW02I	GameTime - ECHO PreSchool Whimsy Inground	\$25,248.00	\$21,208.32	\$21,208.32
5-12 Playground					
1	RDU	GameTime - Custom 5-12 Inclusive Playground- <ul style="list-style-type: none"> Reference Drawing 109417-01-Opt 7 NDS PlayOn! and NDS Inclusion	\$131,996.00	\$59,734.82	\$59,734.82
1	5180	GameTime - Welcome Sign (2-5 or 5-12)	\$748.00	\$658.24	\$658.24
1	14927	GameTime - NDS Play On Sign Package			
1	14928	GameTime - NDS Inclusive Play Sign Package			
Freestanding Equipment					
1	RDU	GameTime - Swing Set- <ul style="list-style-type: none"> Reference Drawing 109417-01-Opt 7 	\$7,132.00	\$6,387.76	\$6,387.76
1	6202	GameTime - Mini Sky Runner (F/S)	\$2,345.00	\$1,055.25	\$1,055.25
1	6142	GameTime - Whirlwind Seat Tilted (F/S)	\$991.00	\$445.95	\$445.95
1	Deluxe Freenotes Deluxe Ensemble IG-REC	Freenotes Harmony - Freenotes Deluxe Recycled Inground Ensemble Collection - Includes: Swirl, Imbarimba, Yantzee, and Tuned Drums If customer chooses to go with Starter Ensemble - remove \$7,970 from Quote	\$22,209.00	\$21,098.55	\$21,098.55
Fitness Equipment					
1	14911	GameTime - Thrive 250	\$15,570.00	\$12,767.40	\$12,767.40
1	14932	GameTime - Thrive Shade	\$5,893.00	\$5,716.21	\$5,716.21
1	COLUMNS	Superior International - Columns for Custom Sail Shade- (1) COLUMN: 08" SCH 40 @ 10' HT + 6" RECESS TO BASE PLATE. (4) COLUMNS: 10" SCH 40 - 1 @ 12' HT + 6" RECESS TO BASE PLATE. - 2 @ 14' HT + 6" RECESS TO BASE PLATE. - 1 @ 17' HT + 6" RECESS TO BASE PLATE. (4) COLUMNS: 12.75" OD HSS - 2 @ 14' HT + 6" RECESS TO BASE PLATE. - 1 @ 17' HT + 6" RECESS TO BASE PLATE. - 1 @ 19' HT + 6" RECESS TO BASE PLATE. (3) COLUMNS: 14" OD HSS - 1 @ 14' HT + 6" RECESS TO BASE PLATE. - 1 @ 17' HT + 6" RECESS TO BASE PLATE. - 1 @ 19' HT + 6" RECESS TO BASE PLATE.	\$75,960.00	\$74,440.80	\$74,440.80

OMNIA
P A R T N E R S



GameTime C/O Great Western Recreation
P.O. Box 680121
Fort Payne, AL 35967
Office: 435-245-5055 Fax: 435-245-5057
www.gwpark.com

01/03/2024
Quote #
109417-01-10

Pioneer Park Playground Option 7

Qty	Part #	Description	List \$	Selling \$	Ext. Selling \$
1	CANOPIES	Superior International - Canopies for Custom Sail Shade- (1) TRIANGULAR CANOPY TO FIT AN OPENING APPROXIMATELY 23' X 30' X 40.5' WITH QUICK TENSION AND RELEASE MECHANISMS, CABLES, & CLAMPS. (1) CUSTOM HYPERBOLIC CANOPY TO FIT OPENING APPROXIMATELY 23' X 27' X 34' X 21' X 37' WITH QUICK TENSION AND RELEASE MECHANISMS, CABLES, & CLAMPS. (1) CUSTOM HYPERBOLIC CANOPY TO FIT OPENING APPROXIMATELY 30' X 29' X 19' X 27' WITH QUICK TENSION AND RELEASE MECHANISMS, CABLES, & CLAMPS. (1) CUSTOM HYPERBOLIC CANOPY TO FIT OPENING APPROXIMATELY 20' X 24' X 29' X 27' X 29' WITH QUICK TENSION AND RELEASE MECHANISMS, CABLES, & CLAMPS. (1) CUSTOM HYPERBOLIC CANOPY TO FIT OPENING APPROXIMATELY 27' X 17' X 23' X 26' X 19' WITH QUICK TENSION AND RELEASE MECHANISMS, CABLES, & CLAMPS.	\$30,515.00	\$29,904.70	\$29,904.70
1	ENG	Superior International - Engineering	\$1,735.00	\$1,700.30	\$1,700.30
1	ABT	Superior International - Advanced Bolt Template	\$200.00	\$196.00	\$196.00
5763	PIP	GT-Impax - Poured in Place Surfacing - **List Price \$129,878.35, discounted per Omnia Contract 5,763 Total Sq Ft (2 pads adjacent to each other) Playground = 5,365 sf, 8' CFH, Includes (2) 50/50 Standard EPDM and Black colors - TBD Simple design includes 3 sections of 2 alternating colors, no TTA pads Fitness pad 1 = 398 sf, 8' CFH Fitness pads include 50/50 standard EPDM and black, with no design, no TTA pads Aromatic Binder Prevailing Wages	\$18.48	\$18.48	\$106,500.24
1	INSTALL	Install - Site Work- •Demo/remove existing equipment. •Demo/remove PIP for 5,365 sq ft at 3 ½" depth. •Excavate/remove existing grass/earth 398 sq ft at 7.5" depth. •Provide/install CAB materials compacted to 90% for 5,763 sq ft at 6" depth. •Provide/install temp fencing around playground area for 350'LF (windscreen and sand bags not included) •Provide and install 40 LF of MOW Curb 6"x8". •Remove and dispose of spoils. •Prevailing wages. •Price includes one (1) move-on only.	\$58,185.00	\$58,185.00	\$58,185.00
1	INSTALL	Install - Playground Equipment-- •Installation only of (1) Gametime structure #107127-01-Opt5 •Installation only of New Thrive 250 •Footings excavation, and concrete. •Equipment assembly. •Removal of spoils. •Prevailing wages. •Price includes one (1) move-on only.	\$78,984.00	\$78,984.00	\$78,984.00



GameTime C/O Great Western Recreation
P.O. Box 680121
Fort Payne, AL 35967
Office: 435-245-5055 Fax: 435-245-5057
www.gwpark.com

01/03/2024
Quote #
109417-01-10

Pioneer Park Playground Option 7

Qty	Part #	Description	List \$	Selling \$	Ext. Selling \$
1	INSTALL	Install - Shade Shelter Installation- •Installation only of Sail Shades by Superior Per drawing #QU00273852 •Footing excavation and concrete. •Rebar cages and anchor bolts included. •Assembly of shade structures. •Prevailing wage •Off-site disposal of spoils. •Final price based on approved stamped plans* •Price includes one (1) move-on only	\$97,370.00	\$97,370.00	\$97,370.00
Contract: OMNIA #2017001134				Sub Total	\$576,353.54
				Freight	\$19,820.00
				Tax	\$24,119.72
				Total	\$620,293.26

Comments

Your Sales Rep is Tyler Kyriopoulos. Please reach out to Tyler at 435-760-5103 if you should have any questions regarding this quote.

Due to the volatility of freight costs, the freight pricing is subject to change at the time of order.

Pricing is subject to change. Request updated pricing when purchasing from quotes more than 30 days old.

***OPTIONAL-To include a Payment and Performance Bond, please add \$9475 plus tax if applicable.

Shipping to Site Address:
828 Harding Street
San Fernando, CA 91340

*Freight charges are based on listed zip code and are subject to change if shipping information changes.

*Deposit may be required.

Customer is responsible for offloading.

Prevailing Wages

City of San Fernando OMNIA # 4001568



GameTime C/O Great Western Recreation
P.O. Box 680121
Fort Payne, AL 35967
Office: 435-245-5055 Fax: 435-245-5057
www.gwpark.com

01/03/2024
Quote #
109417-01-10

Pioneer Park Playground Option 7

Remit Payment to:

GameTime
P.O. Box 680121
Fort Payne, AL 35968

Taxes:

All applicable taxes will be added at time of invoicing unless otherwise included or a tax-exempt certificate is provided.
If sales tax exempt, you must provide a copy of certificate to be considered exempt.

Prices:

FOB Factory.

Orders:

All orders shall be in writing by purchase order, contract, or similar document made out to PlayCore Wisconsin Inc., dba GameTime.
Standard GameTime equipment orders over \$100,000 may require a deposit of 25% at the time of order and an additional 25% at or before order ships.
Standard orders with equipment, installation and surfacing are requested to be split billed.
Equipment, Taxes & Freight as noted above
Installation and Surfacing billed as completed and Due Upon Receipt.

Terms:

Cash With Order Discount (CWO): Orders for GameTime equipment paid in full at time of order via check, Electronic Funds Transfer (ACH or wire) are eligible for a three percent (3%) cash with order discount.

Payment via credit card: If you elect to pay by credit card, GameTime charges a 2.50% processing fee that is assessed on the amount of your payment. This fee is shown as a separate line item and included in the total amount charged to your credit card. You have the option to pay by check, ACH or Wire without any additional fees.

Credit terms are Net 30 days, subject to approval by the GameTime Credit Manager. A completed credit application must be submitted and approved prior to the order being received. Please allow at minimum 2 days for the credit review process. GameTime may also require:

Completed Project Information Sheet (if applicable)

Copies of Payment and Performance Bonds (if applicable)

A 1.5% per month finance charge will be imposed on all past due invoices.

Retainage not accepted.

Orders under \$5,000 require payment with order.

DIR# 1000015526 CSLB#855664

INSTALLATION CONDITIONS:

- **ACCESS:** Site should be clear, level and allow for unrestricted access of trucks and machinery.
- **STORAGE:** Customer is responsible for providing a secure location to off-load and store the equipment during the installation process. Once equipment has delivered to the site, the owner is responsible should theft or vandalism occur unless other arrangements are made and noted on the quotation.
- **FOOTER EXCAVATION:** Installation pricing is based on footer excavation through earth/soil only. Customer shall be responsible for unknown conditions such as buried utilities (public & private), tree stumps, rock, or any concealed materials or conditions that may result in additional labor or materials cost.
- **UTILITIES:** Owner is responsible for locating any private utilities.
- **ADDITIONAL COSTS:** Pricing is based on a single mobilization for installation unless otherwise noted. Price includes ONLY what is stated in this quotation. If additional site work or specialized equipment is required, pricing is subject to change.



GameTime C/O Great Western Recreation
P.O. Box 680121
Fort Payne, AL 35967
Office: 435-245-5055 Fax: 435-245-5057
www.gwpark.com

01/03/2024
Quote #
109417-01-10

Pioneer Park Playground Option 7

ACCEPTANCE OF QUOTATION:

Acceptance of this proposal indicates your agreement to the terms and conditions stated herein.

Purchase Amount: **\$620,293.26**

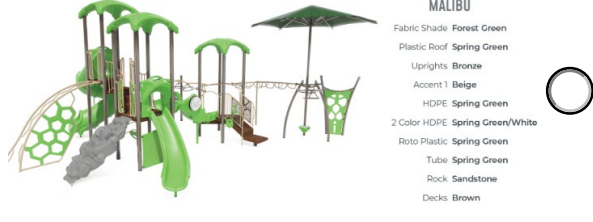
Date: _____

Signature

Please fill out this [ORDER FORM](#), this is required to process the order.

Project: 109417-01-Opt 7
Surfacing: PIP

PALETTE COLOR SELECTIONS Approved by: _____



Swings- Sage basic
Forest Green Fabric



OCEAN FLOOR

Fabric Shade True Blue
Plastic Roof Azure
Uprights Chartreuse
Accent 1 Royal Purple
HDPE Dolphin Gray
2 Color HDPE Spring Green/White
Roto Plastic Azure
Tube Azure
Rock Dark Granite
Decks Brown



SHINE

Fabric Shade Sky
Plastic Roof Orange
Uprights Sky Blue
Accent 1 Spring Green
HDPE Orange
2 Color HDPE Spring Green/White
Roto Plastic Orange
Tube Orange
Rock Sandstone
Decks Gray



VOYAGE

Fabric Shade Charcoal
Plastic Roof Azure
Uprights Sage
Accent 1 Ice Butter
HDPE Dolphin Gray
2 Color HDPE Gray/Black
Roto Plastic Azure
Tube Azure
Rock Deep Granite
Decks Gray



PASSION FRUIT

Fabric Shade Azure
Plastic Roof Yellow
Uprights Orange
Accent 1 Spring Green
HDPE Sky Blue
2 Color HDPE Sky Blue/White
Roto Plastic Yellow
Tube Yellow
Rock Sandstone
Decks Brown



SPRING BLOOM

Fabric Shade True Blue
Plastic Roof Spring Green
Uprights Champagne
Accent 1 Spring Green
HDPE Sky Blue
2 Color HDPE Sky Blue/White
Roto Plastic Sky Blue
Tube Spring Green
Rock Deep Granite
Decks Brown



WATERMELON

Fabric Shade Lime
Plastic Roof Red
Uprights White
Accent 1 Chartreuse
HDPE Green
2 Color HDPE Spring Green/White
Roto Plastic Red
Tube Red
Rock Dark Granite
Decks Blue



POPSICLE

Fabric Shade Brown
Plastic Roof Burgundy
Uprights Vanilla
Accent 1 Azure
HDPE Dolphin Gray
2 Color HDPE Gray/Black
Roto Plastic Burgundy
Tube Burgundy
Rock Deep Granite
Decks Chocolate Brown



SUNRISE

Fabric Shade Yellow
Plastic Roof Royal Purple
Uprights Orange
Accent 1 White
HDPE Dolphin Gray
2 Color HDPE Gray/Black
Roto Plastic Royal Purple
Tube Royal Purple
Rock Deep Granite
Decks Gray



WEST PALM

Fabric Shade Lime
Plastic Roof Orange
Uprights Sky Blue
Accent 1 Spring Green
HDPE Blue
2 Color HDPE Spring Green/White
Roto Plastic Orange
Tube Orange
Rock Sandstone
Decks Gray



RIPTIDE

Fabric Shade True Blue
Plastic Roof Sky Blue
Uprights Sea Mist
Accent 1 Azure
HDPE Orange
2 Color HDPE Orange/White
Roto Plastic Sky Blue
Tube Sky Blue
Rock Dark Granite
Decks Blue



TIMBERLAND

Fabric Shade Sky
Plastic Roof Sky Blue
Uprights Brown
Accent 1 Spring Green
HDPE Sky Blue
2 Color HDPE Sky Blue/White
Roto Plastic Sky Blue
Tube Sky Blue
Rock Deep Granite
Decks Blue



WHIMSY

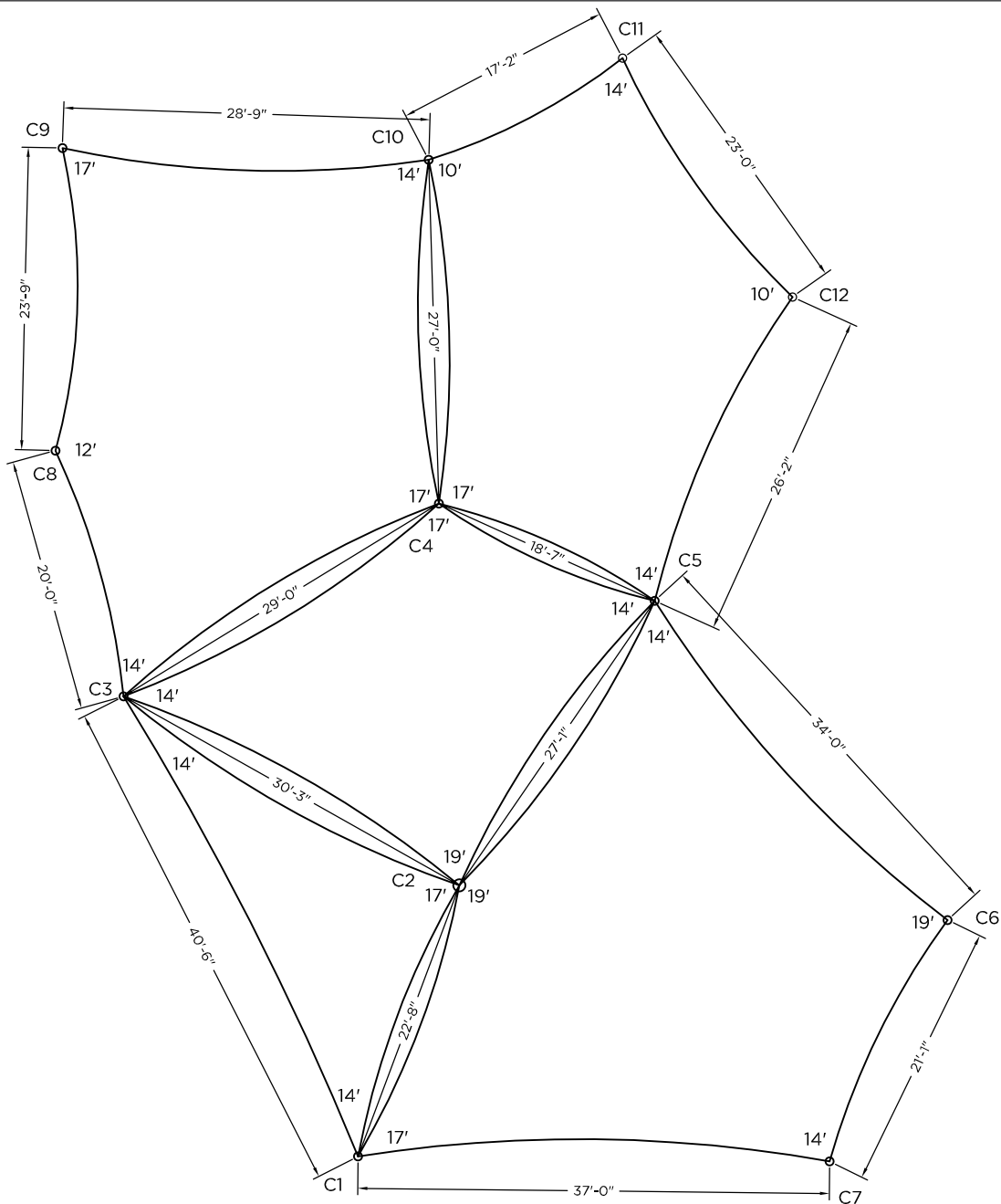
Fabric Shade Navy Blue
Plastic Roof Orange
Uprights White
Accent 1 Blue
HDPE Orange
2 Color HDPE Spring Green/White
Roto Plastic Periwinkle
Tube Sky Blue
Rock Deep Granite
Decks Gray





Column & Footing Schedule

Column ID	Column Size	Est. Footing Size
C1	12.75" OD HSS	6.6' x 6.6' x 3.0'
C2	14" OD HSS	8.5' x 8.5' x 3.0'
C3	12.75" OD HSS	7.0' x 7.0' x 3.0'
C4	14" OD HSS	8.0' x 8.0' x 3.0'
C5	14" OD HSS	7.6' x 7.6' x 3.0'
C6	12.75" OD HSS	5.8' x 5.8' x 3.0'
C7	10" Sch40	5.0' x 5.0' x 3.0'
C8	10" Sch40	4.5' x 4.5' x 3.0'
C9	10" Sch40	5.0' x 5.0' x 3.0'
C10	12.75" OD HSS	6.3' x 6.3' x 3.0'
C11	10" Sch40	4.2' x 4.2' x 3.0'
C12	08" Sch40	3.5' x 3.5' x 3.0'



SHADE

BY SUPERIOR RECREATIONAL PRODUCTS

PROJECT NAME
SAN FERNANDO SAIL SHADES

QUOTE
QUO0273852

TITLE
Proposal

DATE
12/13/2023

SCALE
Not to Scale

DRAWN BY
JSJ

SHEET
1 of 1

These drawings are for reference only and should not be used as construction details. They show the general character and rough dimensions of the structural features. Superior Recreation Products is not responsible for deviation of final shade dimensions. All final dimensions must be verified in the field by the customer. Exact spans, fasteners, materials, and foundations can be determined by a licensed professional engineer upon request.





MEMORANDUM

To: Chair Robert Gonzales and Commissioners

From: Julio Salcedo, Director of Recreation and Community Services

Date: 6/13/24

Subject: Cesar E. Chavez Memorial

RECOMMENDATION

It is recommended that the Parks, Wellness and Recreation (PWR) Commission receive and file an update on the Cesar E. Chavez Memorial by the Ad Hoc Committee Members Chair Robert Gonzales and Vice Chair Patty Lopez.

BACKGROUND/ANALYSIS

The Ad Hoc has met previously with Pueblo Y Salud to discuss the development of a renovation plan for the Cesar E. Chavez Memorial. The Ad Hoc has met with RCS Director Julio Salcedo to review the existing MOU with Pueblo Y Salud. This item was originally added to the agenda by Vice Chair Patty Lopez.

BUDGET IMPACT

There is no impact to the budget by discussing this item.



AGENDA REPORT

To: Chair Robert Gonzales and Commissioners

From: Julio Salcedo, Recreation and Community Services Director
By: Maribel Perez, Recreation and Community Services Supervisor
Linda Bowden-Moreno, RCS Administrative Assistant

Date: June 13, 2024

Subject: Department Programming, Services, Activity, and Business Updates

RECOMMENDATION:

It is recommended that the Parks, Wellness, and Recreation Commission:

- a. Receive and file a report updating the programs, services, activities, and business conducted by the Recreation and Community Services Department; and
- b. Provide staff guidance or recommendations, as appropriate.

BACKGROUND:

1. The mission of the Recreation and Community Services Department (RCS) is to develop and implement enriching community, cultural, and recreational opportunities that foster the overall well-being and personal development of our community.
2. The RCS Department conducts a wide array of programs, services, activities, and business throughout the year. Staff provides a monthly update on items discussed at the Parks, Wellness, and Recreation Commission (PWRC) meetings and welcomes any guidance or recommendations regarding the items presented.

DEPARTMENT UPDATES:

Programs and Services

The RCS Department provides a variety of programming and services for the San Fernando community. All Los Angeles County Department of Public Health protocols and Best Practices guidelines for operating recreational facilities are strictly adhered to. Safety is the top priority for RCS staff when conducting activities for the community. All program participants and park

visitors are made aware of safety guidelines being implemented to ensure patrons feel safe while participating in the Department's programs.

Joshua Tree National Park Camping Trip

In partnership with the National Parks Conservation Association, the City of San Fernando Recreation and Community Services Department hosted six families at Joshua Tree National Park for an unforgettable overnight camping adventure. From Saturday, May 18 to Sunday, May 19, the group, consisting of nine children, three teens, and ten adults, immersed themselves in the natural beauty of the park. They enjoyed a variety of activities, including scenic hikes, exploration of unique landscapes, campfires under the starry sky, and collaborative lunch cooking. The experience provided memorable moments of discovery, bonding, and enjoyment for all participants.

Memorial Day Ceremony

The Memorial Day Ceremony at the American Legion San Fernando Post 176 was a heartfelt collaboration between the City of San Fernando and the American Legion. Over 175 attendees enjoyed a day of commemoration filled with music and a classic American barbecue featuring burgers, hot dogs, fries, and salad. The event included impactful speeches from City Councilmembers, California State Senator Caroline Menjivar, and a representative from Congressman Tony Cárdenas' office. At 3:00 PM, participants joined for the National Moment of Remembrance, honoring those who gave their lives in service to our country.

Summer Day Camp

The City of San Fernando's Summer Day Camp is accepting registrations for children ages 5-13 years. Summer Camp is a seven week program starting June 17- August 2 (closed on June 19th and July 4th). At this time, the program has processed approximately 60 registrations.

Children will participate in a variety of activities such as: arts & crafts, science, sports, cooperative games, swim and field trips (field trips are at an additional cost). You can register online at SFCITY.ORG/SFRecreation or in person at Recreation Park or Las Palmas Park. For questions or more information please call (818) 898-1290.

SENIOR SERVICES

Los Angeles Regional Food Bank Distribution

The Regional Food Bank monthly distribution was held on June 3, 2024 from 9:00am-11:00am. This program continues to serve seniors age 60+ on a monthly basis at Las Palmas Park. This drive-through food program provides a free food kit containing nutritious items such as meats, canned fruits and vegetables, cereals and grains. The program serves an average of 150 seniors monthly. The next distribution will held on July 1, 2024. For more information on food assistance programs please contact Las Palmas Park at 818-898-7340.

Senior Meals

In partnership with ONEgeneration, Las Palmas Park continues to host the Elderly Nutrition Program (ENP) for seniors. Free nutritious hot meals are served Monday through Friday. The program also provides meals five days a week for folks that are homebound, registration and home assessment required. The program is free for senior 60+ with a suggested donation of \$3.

Technology for Seniors

The program is designed to teach seniors the basics of technology such as navigating a computer and registering for an email address. Workshops are offered in English and Spanish at Las Palmas Park. Laptops provided during the class. Next sessions: June 12 (English) and June 26 (Spanish).

Monthly Birthday Celebrations

Every first Wednesday of the month, staff coordinates a monthly birthday celebration for the seniors. Participants and celebrants enjoy coffee, tea and yummy birthday cake. All this is made possible by the continuous support from Pink Tree Insurance.

Monthly Matinee

Every first Thursday of the month Las Palmas Park is transformed into a matinee featuring family friendly films and treats. This month's movie presentation was *The Karate Kid*. The activity is open to the public, showtime is at 12pm.

Platicas de la Vida con Café

In partnership with the Department of Mental Health, Las Palmas Park is hosting workshops to discuss and offer assistance to those dealing with emotional trauma, anxiety, and everyday life situations. Classes are held in Spanish at 9am, this month's sessions: June 13 and 27.

Father's Day Jam Session

This year Las Palmas Park will celebrate Father's Day by honoring senior dads on Friday, June 14. This event will include an afternoon of live salsa and latin rock music featuring the Juan Flautista Latin Band. Light refreshments will be provided.

FREE June Senior Craft

The monthly senior art class will be held on Monday, June 3rd. Seniors will learn to create and construct a picture frame. All supplies provided at no cost. Be on the lookout for more art class and activities to come.

Las Palmas Senior Club News:

- The Father's Day Senior Club Dance will be held on Saturday, June 15 at Las Palmas Park. Doors open at 6pm, music by Kalumnia.
- Senior Club Monthly Meetings occur on the first Sunday of each month at 1:00 pm.
- Senior Trips – The new trip list for the remainder of this year is now available at Las Palmas Park lobby. Excursions include Santa Barbara, Aquarium of the Pacific, Ford

Theatre, Descanso Gardens, several casinos, and more.

Ongoing Senior Programs

The following senior activities are ongoing. For more details, please call Las Palmas Park at 818-898-7340 or visit the City Website at www.sfcity.org.

- Music Class
- Clase de Canto
- Bingo
- Arthritis Exercise
- Crafty Ladies
- Manejo Personal de Diabetes
- Walkable Wednesday
- Classes de Ingles
- Adult Coloring
- Senior Zumba
- Chair Yoga

SOCIAL SERVICES

Teens for a Better Community (TBC)

Prom Glam Day

Ten high school girls from Cesar Chavez Learning Academy enjoyed a day of pampering and glamour just in time for prom! The glam event took place at Las Palmas Park. Participants enjoyed facials, hair, make-up, manicures, and prom dresses. This amazing event was provided at no cost to participants. input and recommendations. These meetings are part of several focus groups targeting specific sectors of the community in an effort to gather feedback on the needs of stakeholders related to recreation, parks and the outdoors.

RECREATION

Leisure & Fitness Classes

Classes are currently in session and available for registration in-person by visiting one of the park offices or online by visting www.sfcity.org/sfrecreation.

- **3 Wins Fitness San Fernando**
Mon, Wed & Fri | 8:15am | Recreation Park
- **Total Body Conditioning**
Mon-Thur | 7:00pm | Recreation Park

- **Inclusive Zumba**
Mon & Wed | 6:00pm | Recreation Park
- **Ninja Ninja Martial Arts**
Mondays | 3pm | Recreation Park
- **Academic Drawing**
Wednesdays | 4pm | Recreation Park
- **Folklorico**
Wed & Fri | 7pm | Las Palmas Park
- **Shotokan Karate**
Saturdays | 9am | Las Palmas Park
- **Senior Music**
Tuesdays | 9am | Las Palmas Park
- **Clase de Canto**
Thursdays | 9am | Las Palmas Park

Sports Programs

Mission City Baseball Trophy Day

June 1st marked the culmination of the Mission City Baseball spring season with the annual Trophy Day celebration. Coaches, parents, family and friends gathered at Las Palmas Park to acknowledge this year's teams and celebrate the achievements of the young athletes. Players were presented with trophies as parents snapped photos of the moment. The morning was complete with team potlucks and families enjoying the park.

Adult Basketball Championship

The best teams of the Spring season faced off on June 6 as they competed for the ultimate title of league champions. The players left it all on the courts but only one team came out victorious. Congratulations to the Shooting Stars!

Youth Basketball Summer Season

It's time for Summer Basketball! The season will run from June through August serving over 100 youth, ages 7-17. The program includes one to two practices per week, led by dedicated volunteer coaches and staff that work hard to develop and prepare the young athletes for their weekly games. Games are played on Saturday mornings, starting at 9:00am at Recreation Park.

Adult CoEd Softball

The City of San Fernando Adult CoEd Softball league wrapped up the spring season. Final games were played on May 7 at Recreation Park. Congratulations to *Twisted Heat* for winning the 2024 spring season. They promise to be back for the summer season.

SPECIAL INTERESTS

Art & Music at the Adobe

On June 22, the Lopez Adobe will open for tours and will host the “Art & Music at the Adobe” mini event. The event will feature an art exhibit displaying the work of students from the City’s Academic Drawing class as well the Senior Craft Workshops. In addition, two free activities will be provided for kids and adults to enjoy in the garden area of the Adobe. Kids will get to participate in a Ukulele demonstration provided by Christopher Clark from “Guitars in the Classroom” while adults can take to the arts and learn about water colors in a session by Zhanna Osminina from Universe Gives. Supplies will be provided and space will be limited, participants are encouraged to arrive early.

The Lopez Adobe will be open for tours from 5-8pm.

SAVE THE DATE!

Mark your calendars! The *Independence Day Festival* will be held on July 4th at Recreation Park, 4:30pm-9:30pm. Enjoy Games, Inflatables, Arts&Crafts, Live Entertainment, Food , Vendors, and a spectacular Drone Show to cap the celebration!

BUDGET IMPACT:

The programs, services, activity, and business updates in this report are part of the Department’s work plan and funds have been allocated for such work in the FY 2023-2024 budget.

CONCLUSION:

It is recommended that the Parks, Wellness, and Recreation Commission receive and file the Department Update Report and provide any guidance or recommendations as appropriate.